



Princeton Junior School Opening Plan: 2021-22

Updated August 25, 2021



Noteworthy for School Opening

Testing: All students must receive a negative COVID-19 test result (PCR preferred) within 72 hours of school arrival on the first day of school. Hard copy of test results must be provided upon arrival.

Student Groupings: Each suite will become a “pod.” Interactions between the pods will be limited. The classroom space will be extended with use of tents and learning stumps to create a fixed indoor/outdoor learning environment for each pod.

Visitors: Special permission must be granted by the front office for any visitors to enter the school building, including PJS Parents. Visitors must wear masks and provide proof of vaccination or medical/religious exemption.

Masks: All students and teachers must wear masks both indoors and outdoors until recommendations are lifted. Masks will not be required outdoors when the temperature is 80 degrees or above. We recommend two-ply cotton face coverings or paper surgical masks. Gaiters and bandanas are prohibited. Face covers should be changed daily, or more often as necessary. Students must have two extra face coverings kept at school. Space will be provided for outdoor mask breaks throughout the day.

Snack/Lunch: Food consumption will take place in designated areas outdoors whenever possible. If indoors, students will stay distanced.



Updated August 24



Health Protocols

If a student exhibits sickness at school, CDC guidelines will be followed. Contact tracing will be implemented through the New Jersey Department of Health should the illness be COVID-19 related.

Please see **PJS COVID-19 RESPONSE PROTOCOLS & PROCEDURES** for the most updated information.



Hygiene and Safety

- Intensive cleaning will take place daily throughout the entire facility.
- Hand sanitizing stations are strategically placed throughout the school building.
- Teachers will encourage students to wash their hands throughout the day, including before and after lunch.
- Students ages 2- Grade 2 will use classroom bathrooms one at a time with teacher monitoring for good handwashing.
- In Grades 3-6, only one student will be allowed in the bathroom at a time.
- All water fountains are disabled until restrictions are lifted.



Arrival and Dismissal Plan

PJS will require all faculty/staff and students to complete the “Daily Q” by 7:30am. This is an important form of record keeping and contract tracing. Daily Q results will be checked at arrival every day.

Kindergarten- Grade 6

Arrival 8:00am-8:15am

Students will remain in their car while a teacher/administrator approves the “Daily Q” results. Upon arrival, K-2 students will enter the building through the front red doors and go directly to their classrooms. Grade 3- 6 students will go directly to the door outside their individual classrooms.

After 8:15am, the **parent must call the front office for admittance.** The student will be marked as tardy. The student may NOT go directly to their classroom until intake is complete.

K-Grade 2 dismissal at 2:50pm

Grades 3-6 dismissal at 3:00pm

Please abide by the designated dismissal times. **PJS will provide all families with two Student ID placards to place in the car(s) front dashboard window.** *Pick up after 3:10pm is considered late and the student will be placed in extended day and charged accordingly.*

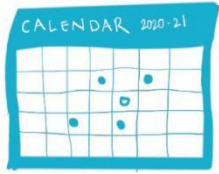
Early Childhood Program

Early Childhood Program arrival 8:00am-9:00am

Students will remain with their parent at the ECP playground gate while a teacher/administrator reviews the “Daily Q” results.

ECP Parents will use outdoor playground gates for drop off and pickup. Separate entrances will be designated for the Toddler and Preschool classes. The ECP playground will be equipped with a barrier to separate the Toddler and Preschool classes during outdoor play time.

ECP dismissal 12:00pm (half day) or 2:45pm (full day) at the playground gates.



Auxiliary Programs

- Early Bird Program is in session for K-6 students and their ECP siblings only. Drop-off from 7:30-8:00am. Prior registration (minimum 48 hours) required. Space is limited. Email Courtney White at cwhite@princetonjuniorschool.org to register.
- Friday Focus Early Dismissal will run approximately twice per month. See Academic Calendar for specific dates. Dismissal locations are the same as regular dismissal locations.
 - ECP will dismiss at 11:45am-12:00 noon
 - K-Grade 2 will dismiss at 11:50am
 - Grade 3-Grade 6 will dismiss at 12:00 noon
- Extended Day (3-6pm) is in session. Pre-registration is required 24 hours ahead. Student pods will be in designated separate locations. Register with Lisa Kasabach, lkasabach@princetonjuniorschool.org.
- After School Enrichment Program is in session and in-person.
- Instrumental classes are in session and in-person.
- Vacation Program is in session and in-person.



School Structures for Pandemic Response

Scenario A:	Government and CDC allow schools to reopen with restrictions.	PJS opens with safety modifications in place.
Scenario B:	School is open. Quarantine needed for an individual student.	Teacher provides work for quarantining student to complete at home.
Scenario C:	School is open. Quarantine needed for Pod.	Pod switches to remote learning.
Scenario D:	Government orders independent schools to shutdown.	PJS switches to remote learning.

